

CrossManager - Standalone CAD files converter

A complete and indispensable tool

With CrossManager, you can **easily exchange your CAD models**, whatever the software you use.

It supports most of the **2D and 3D, native and neutral CAD formats**.

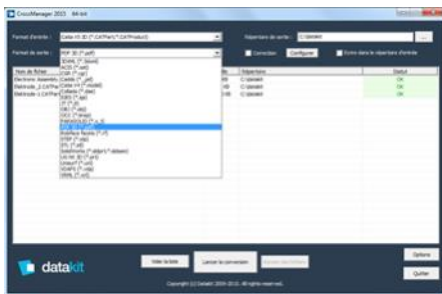
More than 30 reading formats and 20 writing formats are available, so you can obtain a conversion solution that perfectly suits your data exchange needs.

Indispensable to companies working in a multi-CAD environment, this tool avoids data loss and wasted time when exchanging between CAD software.

Intuitive use

The software is **very easy to use**.

Simply specify the desired input and output formats, select your file by browsing or by drag and drop, and run the conversion.



Multiple files can be converted in a row without user interaction.

Users all over the world


CrossManager is **available in several languages** and is **distributed worldwide** by many **resellers** that provide Datakit CAD data exchange solutions.



Given the success of its international experience, Datakit still wants to consolidate its resellers network. If you are a reseller, we invite you to join us! sales@datakit.com

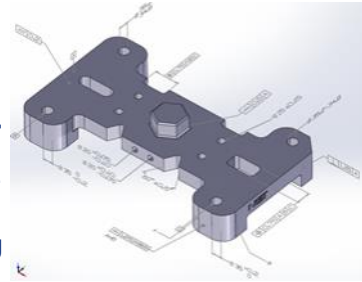
Formats supported by CrossManager

Inputs		Outputs
3DVIA / CATIA / SOLIDWORKS Composer	IGES Inventor JT	3DXML
3Shape DCM	Navisworks OBJ	3MF
ACIS	Parasolid	ACIS
CADDs	PLMXML	CADDs
CATIA V4 2D	Prodera	CATIA V4 3D
CATIA V4 3D	ProE / Creo Parametric 2D	CATIA V5 3D
CATIA V5 2D	ProE / Creo Parametric 3D	CGR
CATIA V5 3D	Revit	COLLADA
CATIA V6 / 3DEXPERIENCE 2D	Rhino	DXF
CATIA V6 / 3DEXPERIENCE 3D	Robcad	EMF
CEREC - Sirona Dental	Solid Edge 2D	FBX
CGR	Solid Edge 3D	glTF
Creo View	SOLIDWORKS 2D	IFC
DWG / DXF 2D	SOLIDWORKS 3D	IGES
DWG / DXF 3D	STEP	JT
FBX	STL	OBJ
Fusion 360	UG NX 2D	Open CASCADE
glTF	UG NX 3D	Parasolid
IFC	VDA	PDF 2D
		PDF 3D
		PRC
		Robcad
		SOLIDWORKS 3D
		STEP
		STL
		UG NX 3D
		Unisurf
		VDA
		VRML



Why choose CrossManager?

- **Easy** to install and use
- **Fast** data processing
- Regular **updates**
- **Robust** and **independent** technology
- **Responsive** customer support
- Supported data (depending on the format):



- ◆ Model **tree**
- ◆ **Parts & assemblies**
- ◆ **Geometry, wireframe, mesh, topology, Brep**
- ◆ Linear and angular **dimensions**
- ◆ **Annotations, PMI, FD&T, GD&T**
- ◆ **Texts**
- ◆ **Attributes** (color, visibility, layers...)
- ◆ **Metadata**

CrossManager Advanced

An "**Advanced**" version of CrossManager is available. It enables to **automate conversion tasks**, through a command line execution (**batch**). It can also **convert entire directories recursively**, without any limitation.

