

**Reference Manual**

## **PRELUDE**

The following document defines the whole application **Cross Manager 2012** designed to convert 3D models, from any format of the list of available input format to any of the list of available output format.

As for new users of DATAKIT's products, we highly recommend to take part in training sessions for **Cross Manager 2012** to better know all its functionalities.

## Contents

I.	To begin with	4
1	CONFIGURATION REQUIREMENTS	4
2	LANGUAGE	4
3	DOCUMENTATION	4
4	CROSS MANAGER 2012 INSTALLATION	5
4.1	SOFTWARE INSTALLATION	5
4.2	LICENSE INSTALLATION	5
5	HOW TO REMOVE CROSS MANAGER 2012	5
6	TECHNICAL SUPPORT	5
II.	Product overview	6
1.	CONTEXTUAL MENU (right button of mouse)	6
2.	INPUT FORMAT	7
3.	OUTPUT FORMAT	8
4.	OUTPUT FOLDER (IF REQUIRED)	9
5.	FILE SELECTION AND LIST CREATION	10
6.	LIST MANIPULATION BEFORE CONVERSION	11-12
7.	LIST MANIPULATION AFTER CONVERSION	13
8.	CONFIGURE	14
III.	Annexe	
1.	LIST OF AVAILABLE COMBINAISONS OF SUPPORTED FORMATS (Input / Output)	15

## IV. To begin with

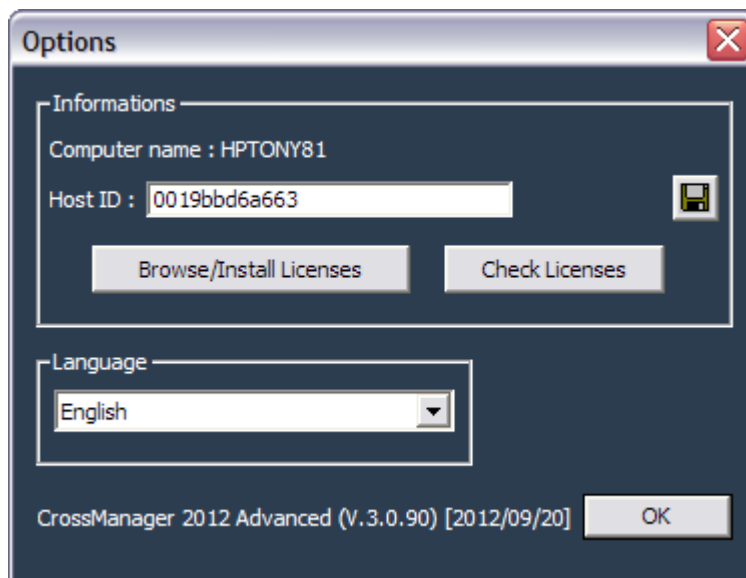
### 1. CONFIGURATION REQUIREMENTS

**Cross Manager 2012** is delivered by downloading **crossmanager\_2012\_installer.zip** containing the installation program of the current release for Windows (NT4 / 2000/XP/Vista/7). 32-bit and 64-bit versions are available.

The hardware configuration (i.e. processor speed, RAM, etc.) mostly depends on the size of the files that have to be converted. However, 2 GHz CPU, 1024 MB of RAM are recommended. The installation of **Cross Manager 2012** will take about 150 MB on your hard drive disk.

### 2. LANGUAGE

**Cross Manager 2012** is available both in French and English. To run it in the language of your choice, Press the «**Options**» button that opens the following window:



The combobox allows you to choose which language you want (English or French.)

The Save icon (disk icon) redirects the Host Name and the Host Id of the PC into a file.

The Browse / Install Licenses button allows you to select your license file at its location.

And the Check Licenses button display the list of available licenses in a small Window.

### 3. DOCUMENTATION

The **Cross Manager 2012** documentation is available both in French and English, in .pdf format.

## 4. CROSS MANAGER 2012 INSTALLATION

### 4.1. Software installation

The downloaded file **crossmanager\_2012\_installer.zip** allows installing CrossManager 2012 with the setup program included in the compressed file.

The program suggest you to install **Visual C++ Runtime Libraries (x86 or x64)** if these one are not yet installed on your computer.

### 4.2. License installation

In the «**Options**» menu, click on the «**Browse/Install licenses**» button, then browse your disk to the location of your license file and select it.

## 5. HOW TO REMOVE CROSS MANAGER 2012

Proceed as follows:

- Open *Start \ Parameters \ Control Panel \ Add/Remove Programs*,
- Select *CrossManager*,
- Delete *CrossManager*,
- Remove all short-cuts from the *Start menu* if necessary.

## 6. TECHNICAL SUPPORT

**DATAKIT**

**6 place des Terreaux**

**69001 LYON**

- **Tél. : 33 (0)4 72 26 50 29**
- **Fax : 33 (0)4 78 28 42 48**
- **[E-mail : support@datakit.com](mailto:support@datakit.com)**

## 1. Product Overview

### 1. Contextual Menu (right button of mouse)

The mouse to be used for **Cross Manager 2012** needs two buttons at least, but profits of an eventual third one or of a wheel. This menu is depending of the context in which it is used, before or after the translation.

#### Kinds of actions

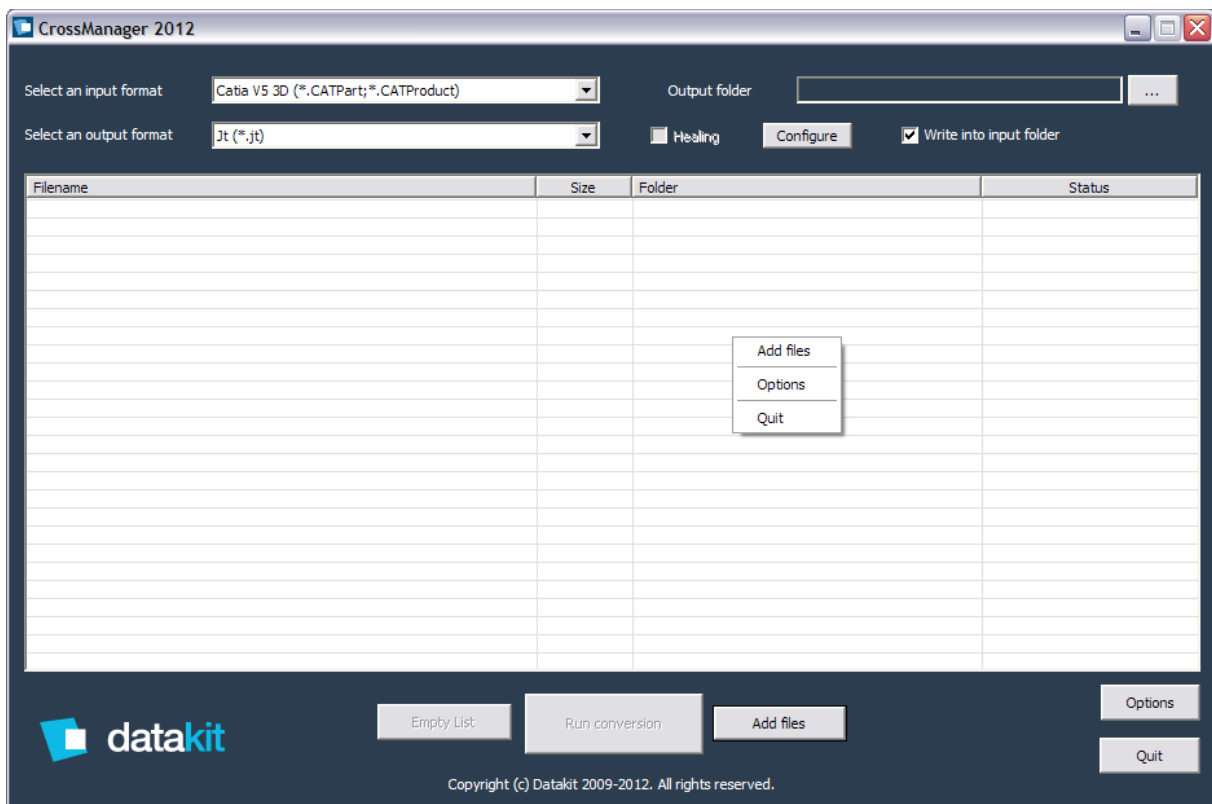
The mouse can be used in two ways, either by clicking, or by dragging.

- «**Click**» (press and release immediately a button without moving)
  - Clicks left are dedicated to choice of actions and highlighting.
  - Clicks right is dedicated to contextual menu.
- «**Drag & Drop**» (press a button and move the mouse, without releasing the button)

Drags are dedicated to addition of files in the list that fulfill the Input Format type.

- «**Double Click**» has no effect on the list before conversion. On the opposite, after conversion, it is the way to open the log file in notepad editor.

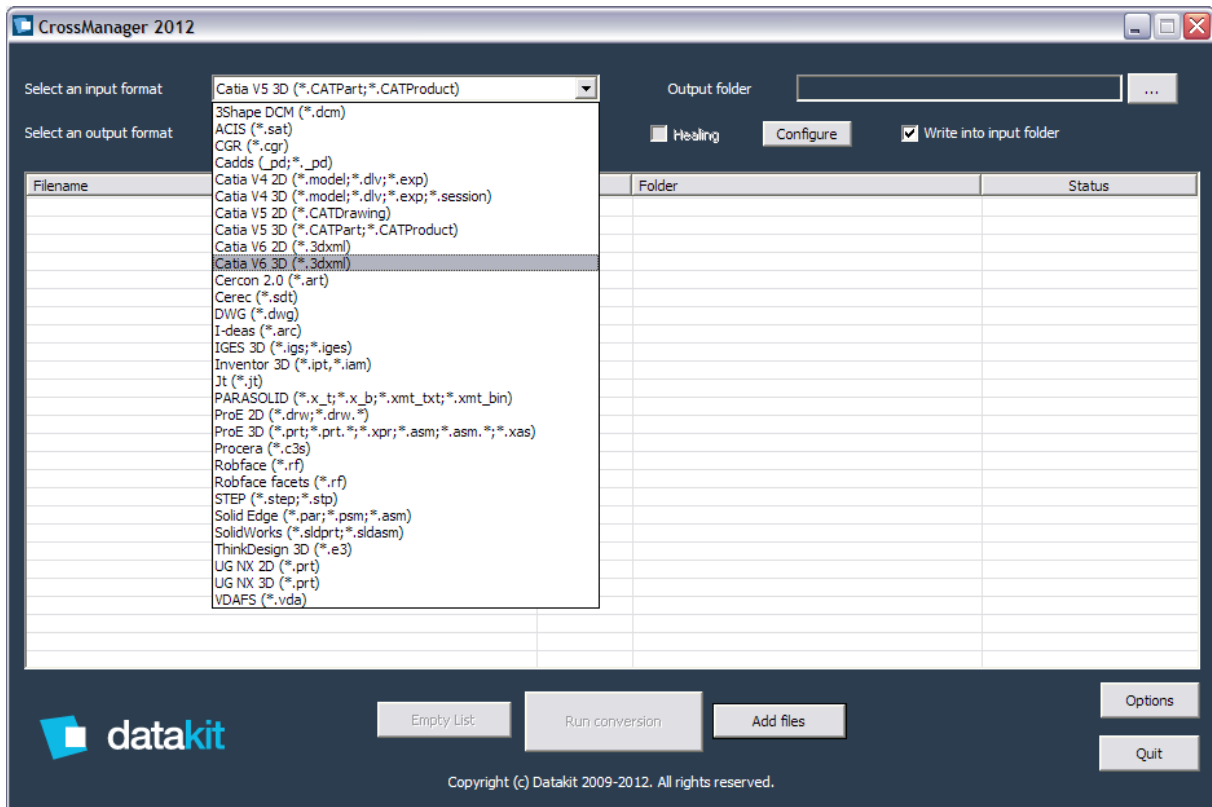
Here is the appearing menu when using «**right Click**»:



This menu let appear functions available with different buttons described below. The Menus **Add Directory** and **Add Directory (recursive)** as well as **Load a list of files to be converted** are not available in the basic version.

## 2. Input Format

When you click the black arrow of the combobox called “Select an input format”, here is the list of CAD format supported as input by **Cross Manager 2012**:

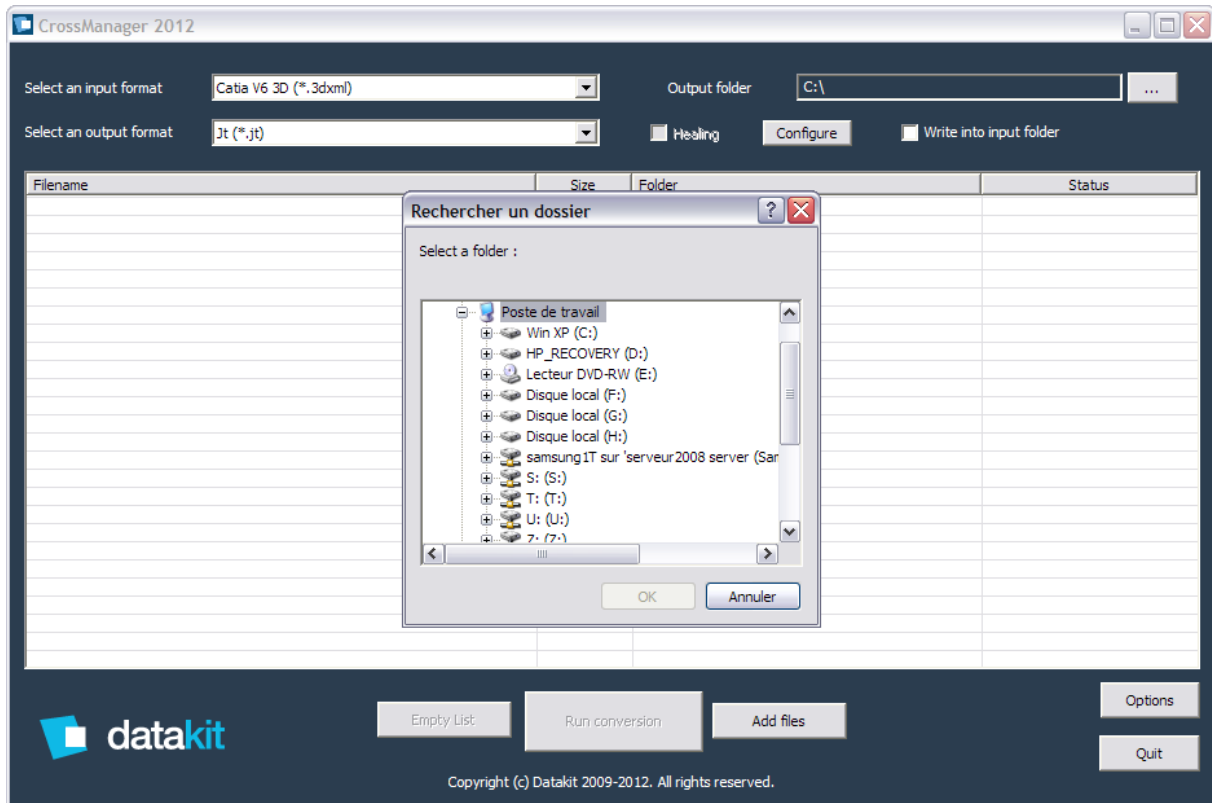


A filter will limit the selection of files to the selected format with the “Add Files” button.



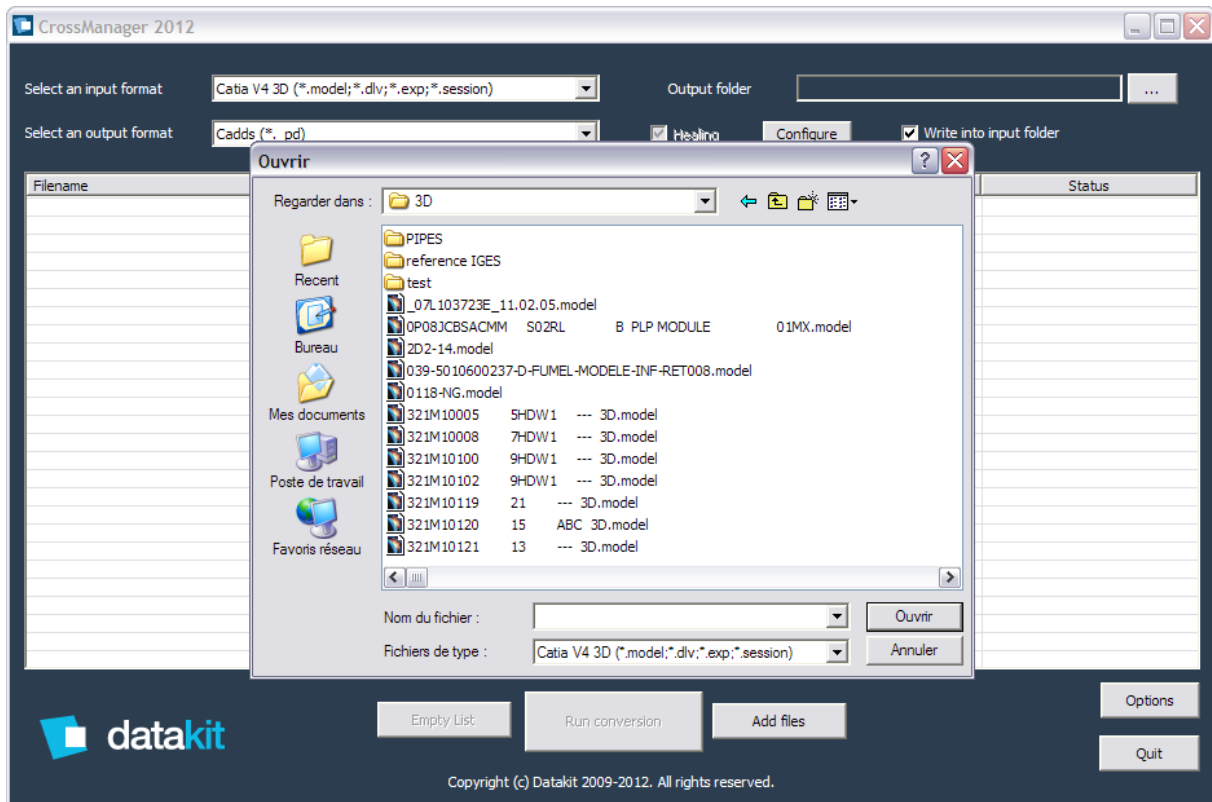
## 4. Output Folder (if required)

If the checkbox called “**Write into input folder**”, is checked the output file generated by **CROSS Manager 2012** will be created inside the input folder. If you want to choose your output directory, uncheck this checkbox, and click on the “...” button in the upper right corner to select this folder.



## 5. File Selection and List Creation

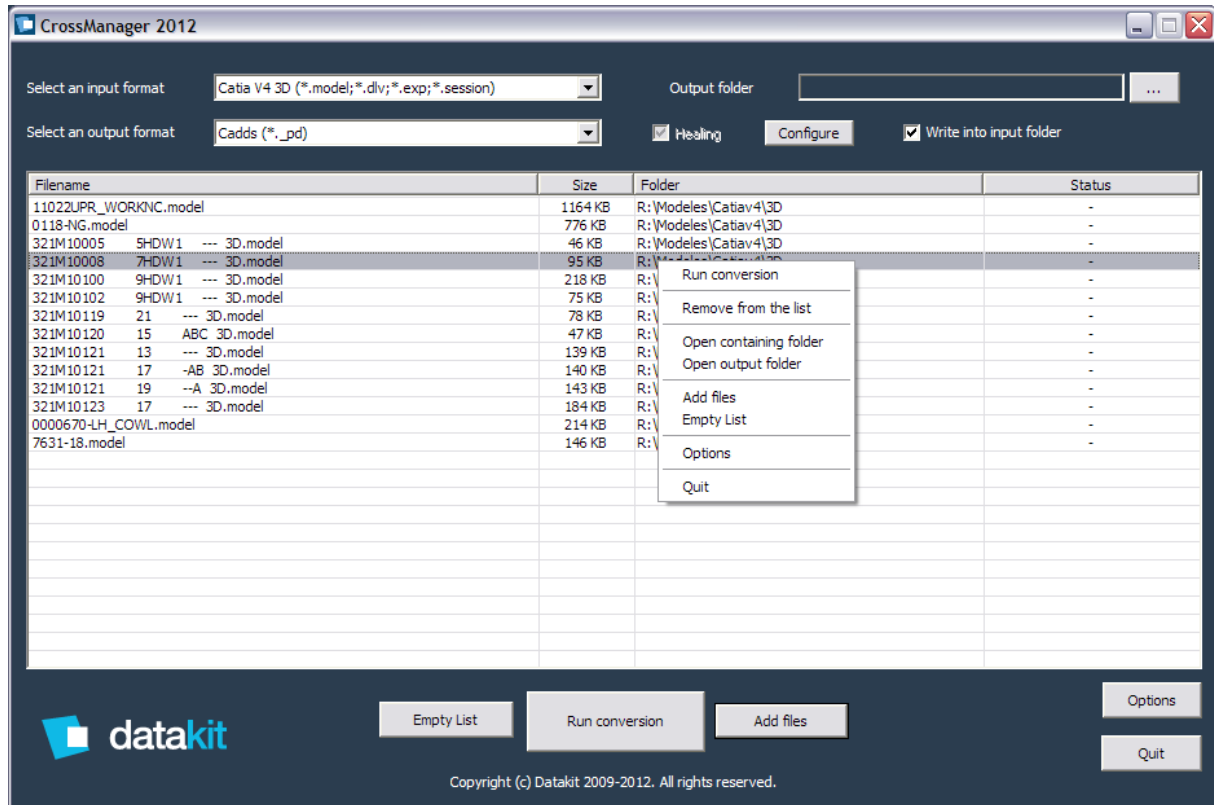
When you click on the “**Add Files**” button, the following window appears and let you select the database to convert with a list restricted to the chosen format of input files: (This list is limited to the number of 100 files to be converted for the basic version)



The «**Drag and Drop**» feature is also available to fill the list of input files to convert. The «**Drop**» of the file will be possible only if the selected file fulfill the input format chosen. This applies as well to Folders: All the files from this folder that fulfill the input format are added to the list.

## 6. Manipulation of List of files to convert.

Once your list is created, you can edit this list with the contextual menu as shown in the following window:



The “**Run conversion**” menu as well as the “**Run conversion**” Button starts the converter with each file of the list created above one after the other.

The “**Remove from the list**” menu allows suppressing a set of selected files from the list. Furthermore file or Files can be removed from the list by highlighting the File(s) and pressing the « **Del** » key

The “**Open containing folder**” opens the folder in which is located the file, inside the File Explorer.

The “**Open output folder**” opens the folder in which output files are generated, inside the File Explorer.

The “**Add files**” menu as well as the “**Add files**” Button opens the File browser to select a new file for the list.

The “**Empty List**” menu as well as “**Empty List**” button clears the list of files to convert.

## CROSS Manager 2012

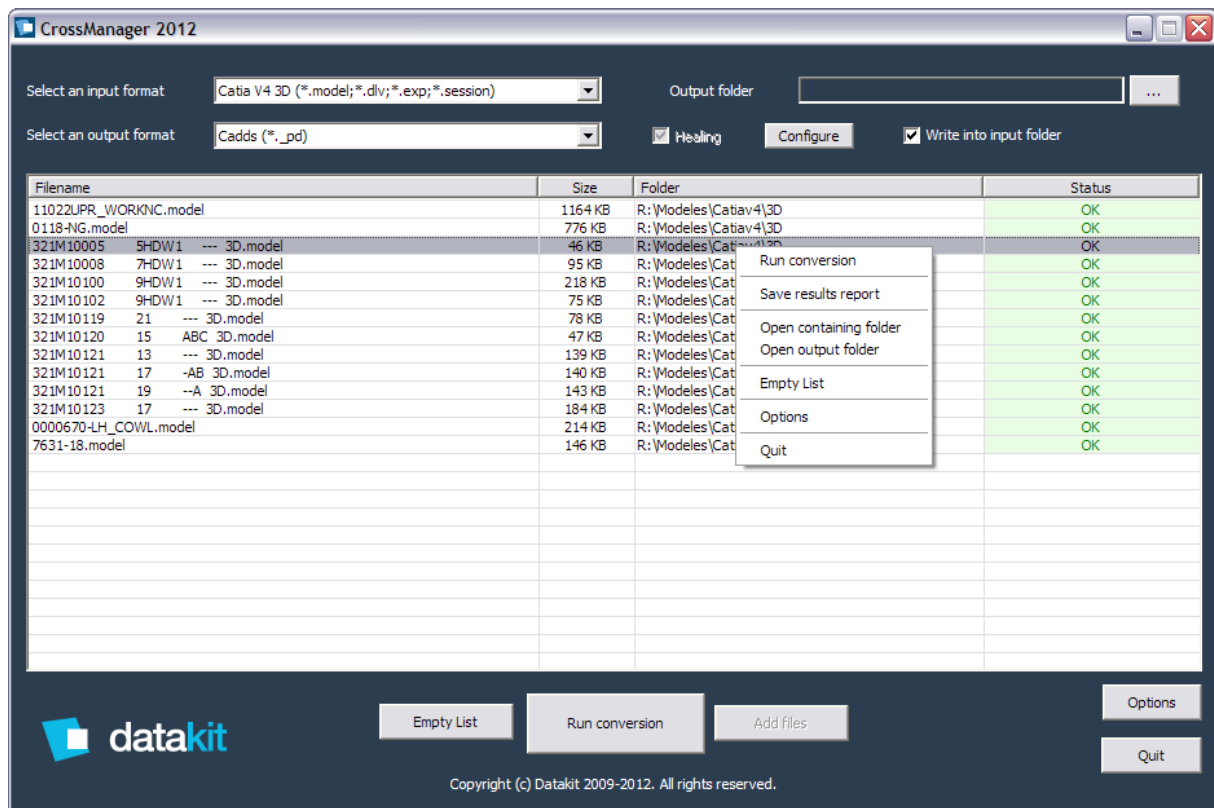
---

The **“Options”** menu as well as the **“Options”** Button opens the Options Window to allow you to change the Language of the interface.

The **“Quit”** menu as well as the **“Quit”** Button stops the execution of CROSS Manager 2012.

## 7. Manipulation of List of files after conversion

After conversion has ended, you can use the **contextual menu** as shown below:



The menu « **Run conversion** » allows running again converter on the files of the list.

The menu « **Save results report** » specific at this context allows to record the content of this window in an excel file (CSV Format) with all the File names, the File size and the status of conversion

The Menu « **Open containing folder** » allows opening with Windows explorer the folder in which input file is present.

The menu « **Open output folder** » allows opening with Windows explorer the folder in which output file is present.

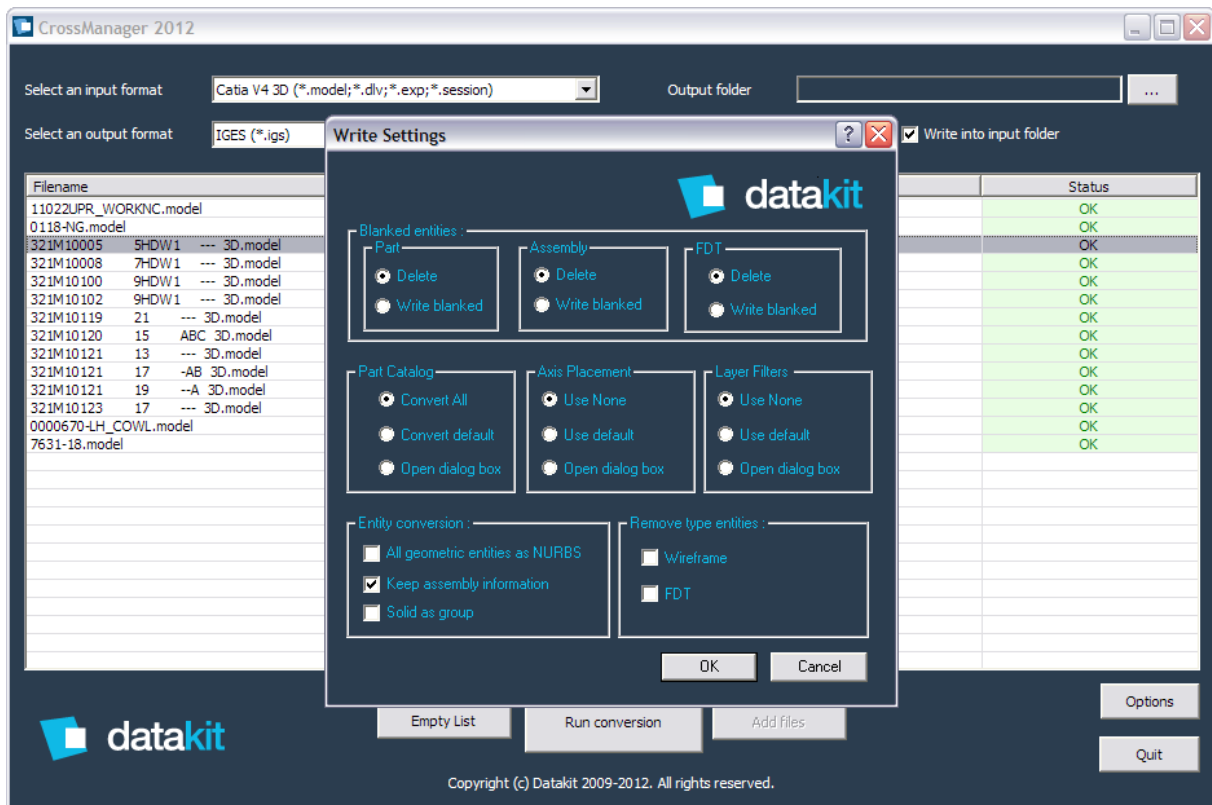
The Menu « **Empty list** » specific to that context, as well as button, empties the spooler of files to convert.

The menu « **Options** » as well as button, allows opening Option window.

The menu « **Quit** » as well as button, ends the execution of the converter..

## 8.CONFIGURE

When «**Output Format**» is “IGES” or “STEP” you are allowed to filter some kinds of data by unchecking the checkbox « **correction** » (if not, the « **Config** » button is not active) When you Press the « **Config** » button, the following dialog box looks like that:



Parts can be deleted or written as blanked entities, as well as Assemblies or FDT.

Wireframe entities or FDT entities can be filtered and removed from the output.

The Dialog Box allows three parameters:

- Choose one model out of several in a catalog.
- Select a new referential by choosing an Axis placement
- Process of Layer by activation of a filter.

The converter allows you operate this transformation into the model:

- All geometric entities can be converted into nurbs (curves and surfaces)
- Keep assembly information or not.
- Keep Solid entities as group or not.

# CROSS Manager 2012

## III Annexe

### 1 LIST OF AVAILABLE COMBINATIONS OF SUPPORTED FORMATS (Input / Output)

Inputs	Outputs															
	ACIS	CADDS	CATIA V4 3D	CATIA V5 3D	CGR	DXF	IGES	JT	Parasolid	Robcad	SolidWorks 3D	STEP	STL	Unisurf	VDA	VRML
3Shape DCM								X					X			X
ACIS	X	X	X	X	X		X	X	X	X	X	X	X	X	X	X
CADDS	X	X	X	X	X		X	X	X	X	X	X	X	X	X	X
CATIA V4 2D						X										
CATIA V4 3D	X	X	X	X	X		X	X	X	X	X	X	X	X	X	X
CATIA V5 2D						X										
CATIA V5 3D	X	X	X	X	X		X	X	X	X	X	X	X	X	X	X
CATIA V6 3D					X		X	X	X			X	X			X
Cercon								X					X			X
CEREC								X					X			X
CGR							X	X					X			X
DWG				X												
I-deas	X	X	X	X			X		X	X	X	X		X	X	
IGES	X	X	X	X	X		X	X	X	X	X	X	X	X	X	X
Inventor	X	X	X	X	X		X	X	X	X	X	X	X	X	X	X
JT	X	X	X	X	X		X		X	X	X	X	X	X	X	X
Parasolid	X	X	X	X	X		X	X	X	X	X	X	X	X	X	X
Pro/ENGINEER 2D						X										
Pro/ENGINEER 3D	X	X	X	X	X		X	X	X	X	X	X	X	X	X	X
Procera								X					X			X
Robcad	X	X	X	X			X		X	X	X	X		X	X	
Solid Edge	X	X	X	X	X		X	X	X	X	X	X	X	X	X	X
SolidWorks 3D	X	X	X	X	X		X	X	X	X	X	X	X	X	X	X
STEP	X	X	X	X	X		X	X	X	X	X	X	X	X	X	X
ThinkDesign	X	X	X	X			X		X	X	X	X		X	X	
UG NX 2D						X										
UG NX 3D	X	X	X	X	X		X	X	X	X	X	X	X	X	X	X
VDA	X	X	X	X	X		X	X	X	X	X	X	X	X	X	X